



# 10 Assembly: Electro-Mechanical Assembly

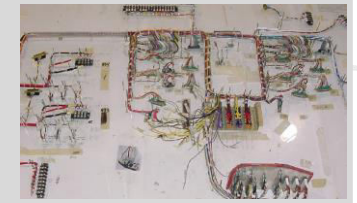


## PROCESS DESCRIPTION

- Design and Build —>
- Electro Mech Assembly —>
- Wire Harness —>
- Radio Freq Cables —>

## CAPABILITIES

- Engineering development from customer specification including testing and certification support
- Electrical, Mechanical, Hydraulic Actuation Assemblies
- Laser Strip, Laser Mark, Man/Auto Termination & Test
- Automated Strip, Test capability 9kHz to 20kHz



## PRODUCT IDENTIFICATION

- ☪ Electronics Racks
- ☪ Winglet Lights
- ☪ Rail Switches
- ☪ De-Icing Truck Systems

## QUALIFICATIONS

- ☪ AS9100
- ☪ Certification Experience
- ☪ Soldering
- ☪ Electrical Testing

## DIFFERENTIATION

- ☪ Experts in transfer of work from customer shop
- ☪ Vertically integrated supply of Sheet Metal, Machining, Composites, Wire Harness, Finishing and Sub Assembly
- ☪ 4 sites with overlapping capability
  - ☪ Auburn, WA
  - ☪ Savannah, GA
  - ☪ Lenexa, KS
  - ☪ Cottonwood Falls, KS
  - ☪ Proximity to St. Louis, Wichita and Seattle



**Vertically Integrated System Integrator**