



9 Assembly: Manual & Automated ASSY

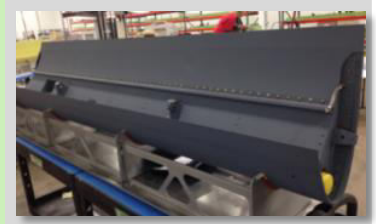
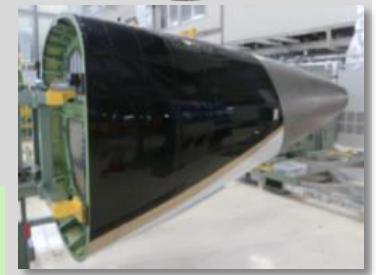
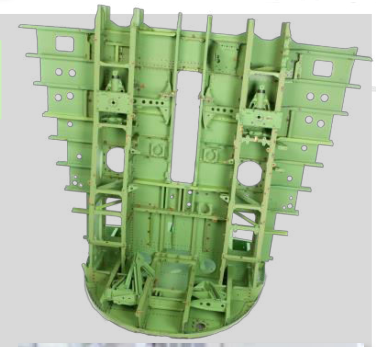


PROCESS DESCRIPTION

CAPABILITIES



- Bench Tool Assembly → Installation of hardware and multiple details
- Automated Assembly → 1X Gemcor Drill and Fill, 1X Robotic Drill Center
- Major Structural Assembly → Including Design Build (Qualification, Testing and Certification), Build to Print and Tool Designing



PRODUCT IDENTIFICATION

- Stuffed Tail Cone Assembly
- Wheel Well Assemblies
- Cockpit Crew Floor
- Slat Assemblies

DIFFERENTIATION

- Experts in transfer of work from customer shop
- Vertically integrated supply of Sheet Metal, Machining, Composites, Wire Harness, Finishing and Sub Assembly
- 4 sites with overlapping capability
 - Auburn, WA
 - St. Charles, MO
 - Lenexa, KS
 - Cottonwood Falls, KS
 - Proximity to St. Louis, Wichita and Seattle

QUALIFICATIONS

- AS9100
- Sealing
- Ground Stud
- Assembly Jig Qualification

Structural Assembly and Work Transfer specialists